

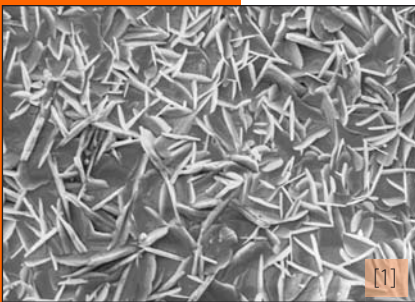


# Paint finish

**KTL** painted + **POWDER** coated  
**Protection PLUS**

- + INNOVATIVE & STATE-OF-THE-ART TECHNOLOGY
- + SUPREME ANTI-CORROSION PROTECTION FOR STEEL SURFACES
- + ENVIRONMENTALLY FRIENDLY

DHOLLANDIA uses state-of-the-art surface treatment and coating technologies to offer **supreme anti-corrosion protection** on the main steel components (lift frame, lift arms, the platform hands, ...) and to make its customers benefit from an increased life expectancy and superior aesthetical appearance.



**Protection PLUS** integrates the following technologies :

- **Shot blasting** of welded assemblies
- Strong acidic **degreasing**
- **3-cation zinc phosphate** : supreme chemical conversion layer for steel [1], providing increased anti-corrosion protection and improved paint adhesion
- ...

# Paint finish

• **KTL or cationic electro coating by submersion** [2] : applied by electrostatic deposition during submersion, and cured at 180°C, epoxy KTL is an extremely high quality primer paint. It is widely used across the automotive industry and offers excellent properties such as :

- high chemical resistance;
- superior corrosion resistance;
- enhanced edge coverage;
- superior protection against stone projection;
- more uniform film thickness, incl. cavities and hollow tubes.



[2]

• **Polyester powder top-coat** [3] : one step further, ahead of most competitors, DHOLLANDIA applies electrostatic polyester powder coating to many KTL painted steel parts. After curing at 180°C, the combined efforts lift the finish of DHOLLANDIA lifts to the highest quality level.



[3]

Result after 1000 h salt-spray test

• **Environmentally friendly**

The environmental balance of Protection PLUS is strongly positive. Thanks to the application of Best Available Techniques in the treatment of air and waste waters, the burden for nature and man is reduced to a minimum.

